

Unit Details

Unit Code	<input type="text" value="CITS2002"/>	Unit Title	Systems Programming
Faculty	<input type="text" value="Engineering And Mathematical Sciences"/>	School	<input type="text" value="Physics, Mathematics & Computing"/>
Campus	<input type="text" value="CRAWLEY"/>	Teaching Period	<input type="text" value="SEM-2"/>
Year	<input type="text" value="2018"/>		

Search

Clear

Summary Unit Results

Number of Unit Enrolments: 306

[View Coordinator Comments](#)

Number of SURF Evaluations: 88

[View Student Comments](#)

Response Rate: 28.76%

Coordinator(s): Chris Mcdonald, Jun Hua Guo

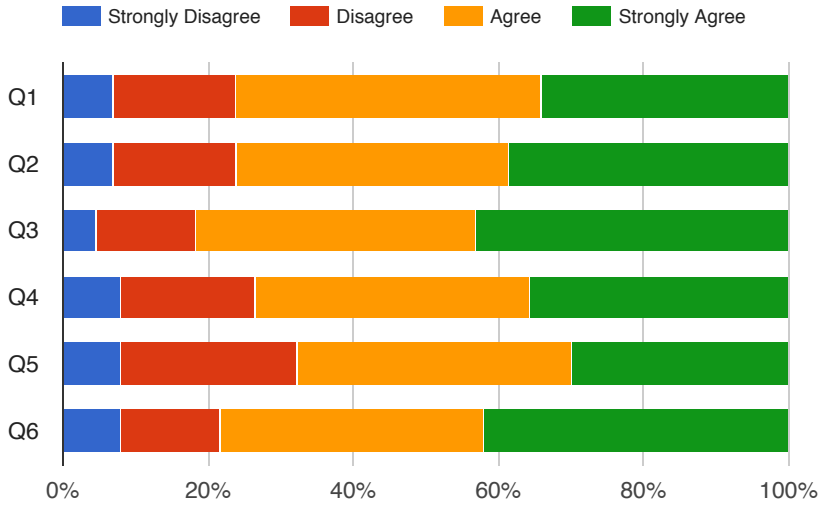
Survey Start Date: 30/07/2018

Survey End Date: 17/11/2018

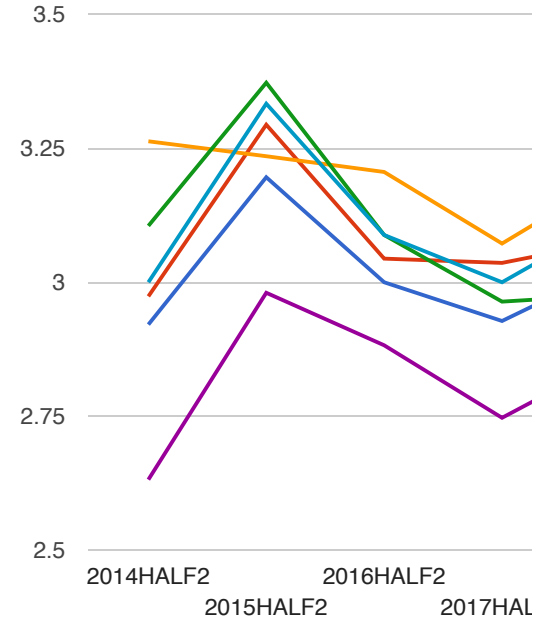
Question	Number of Responses				Average Responses			
	Strongly Disagree	Disagree	Agree	Strongly Agree	Unit	School	Faculty	UWA
Q1. It was clear what I was expected to learn in this unit	6 (6.82%)	15 (17.05%)	37 (42.05%)	30 (34.09%)	3.034	3.199	3.227	3.301
Q2. The assessment requirements were clearly stated	6 (6.82%)	15 (17.05%)	33 (37.50%)	34 (38.64%)	3.080	3.237	3.269	3.339
Q3. The assessment tasks were closely linked to the unit objectives	4 (4.55%)	12 (13.64%)	34 (38.64%)	38 (43.18%)	3.205	3.275	3.312	3.395
Q4. The unit was well organised	7 (8.05%)	16 (18.39%)	33 (37.93%)	31 (35.63%)	3.011	3.036	3.115	3.259
Q5. The learning resources (handouts, text, web resources, etc) were adequate for my study in the unit	7 (8.05%)	21 (24.14%)	33 (37.93%)	26 (29.89%)	2.897	3.000	3.110	3.262
Q6. Overall, this unit was a good educational		12	32	37				

experience	7 (7.95%)	(13.64%)	(36.36%)	(42.05%)	3.125	3.113	3.168	3.306
------------	-----------	----------	----------	----------	--------------	-------	-------	-------

Response Distribution



Response Trend



Detailed Unit Results

Question **Q6. Overall, this unit was a good educational experience**

Export

Period	Response Rate (%)	No. of Responses				SURF Score				Percentile Rank	Unit Coordinator
		Strongly Disagree	Disagree	Agree	Strongly Agree	Unit	School	Faculty	UWA		
2014 Second half	28.15%	1 (2.63%)	7 (18.42%)	21 (55.26%)	9 (23.68%)	3.000	2.851	3.057	3.168	31	Chris Mcdonald
2015 Second half	28.90%	1 (2.00%)	2 (4.00%)	23 (46.00%)	24 (48.00%)	3.400	2.853	3.061	3.219	79	Chris Mcdonald
2016 Second half	33.33%	6 (8.96%)	8 (11.94%)	24 (35.82%)	29 (43.28%)	3.134	2.951	3.151	3.274	35	Chris Mcdonald

2017 Second half	28.62%	7 (8.43%)	10 (12.05%)	42 (50.60%)	24 (28.92%)	3.000	3.010	3.146	3.275	20	Chris Mcdonald, Rosie Kriskans
2018 Second half	28.76%	7 (7.95%)	12 (13.64%)	32 (36.36%)	37 (42.05%)	3.125	3.113	3.180	3.310	34	Chris Mcdonald, Jun Hua Guo